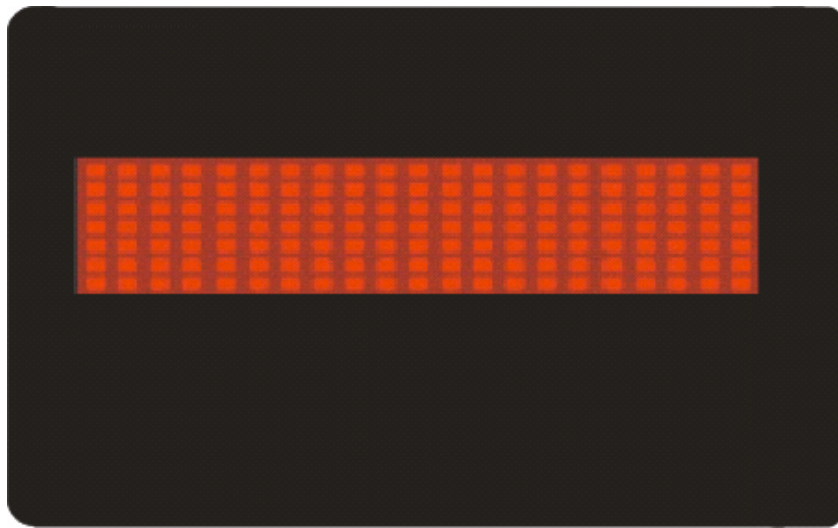


LED Name Badge 3.0



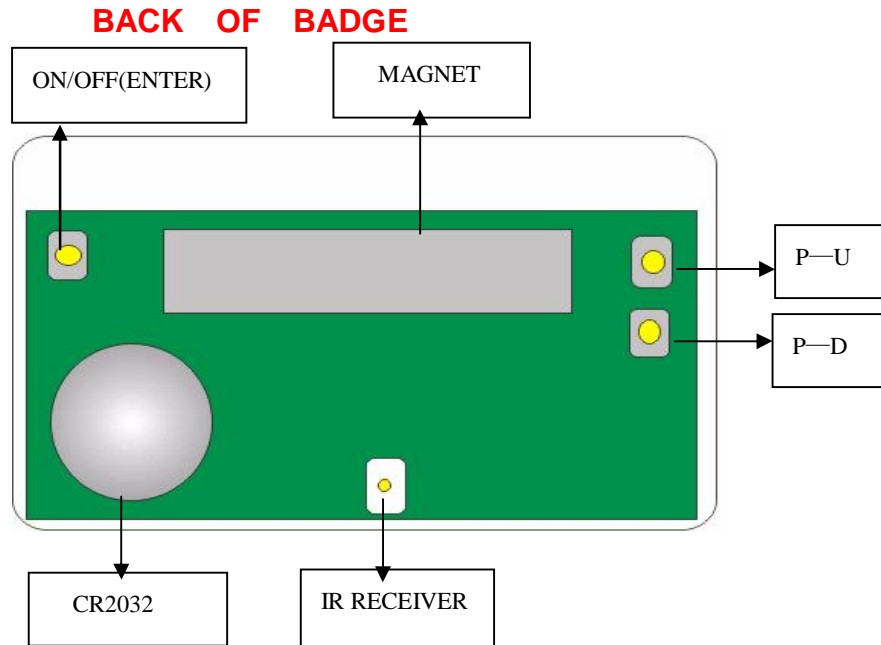
User's Manual

—.Illustration:

1. Power switch is ON/OFF(ENTER), the crust of battery seat is anode.
2. Badge can store 6 messages(1-2 can store 512 characters, 3-6 can store 256 characters), there is only can display any one every time.

3. The power supply for product is CR2032, please change battery when the brightness isn't enough or can't display (The battery can hold 20 hours).
4. Two communication ways: by key-press and PC remote.

Notes: Page Up =P-U, Page Down=P-D



二. Key-press information:

Open power ON/OFF, adjust "P-U" or "P-D"(1-6), select the input text (INPUT), move-left speed(Speed), brightness control(LUM).

1. SWITCH: Choice menu(Total 6 pages), choose the display information

- (1) Enter choice menu, press "ENTER" when display SWITCH.
- (2) The right of display show the current data(1-6), by "P-U" or "P-D" to adjust the number between 1-6, press "ENTER" when you need page, the confirmed number show in the middle.



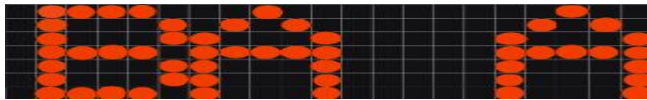
- (3) Press "P-D" for 3 seconds or wait 10 seconds, the display will exit the operation and enter the show estate.

2. INPUT: Input the content of the text (input the text newly).

- (1) Enter choice menu, press "ENTER" when the display show "INPUT" by "P-U" or "P-D"(1-6).

(2) The right show the character, input character by "P-U" or "P-D", press "ENTER" after finish.

(3) If you need input continuous character, press "ENTER" once a character confirmed,(press P-U or P-D all along, the character will roll until you loosen the key-press).



(4) If you need add a blank, please press "ENTER" again.

(5) If you need delete a character, press "ENTER" for 3 seconds, the character is deleted when the display resumed to still.

(6) Press "P-D" for 3 seconds or wait for 10 seconds, the display will exit operation and show the message.

3. LUM: Adjust the luminance (The number is larger, the luminance is higher).

(1) Enter choice menu, adjust menu by" P-D "or" P-U"(1-6) when it show LUM, press "ENTER".

(2) The number on the right show the brightness grade, adjust the number between 1-9 by" P-U" or "P-D", press "ENTER" after finish adjusting.

(3) Press" P-D" for 3 seconds or wait for 10 seconds to exit.

4. SPEED: Adjust the move speed(the number is larger, the speed is faster).

(1) Enter choice menu, show SPEED by P-U or P-D(1-6),then press "ENTER".

(2)The number on the right is for the speed, adjust the number by P-U or P-D, press "ENTER" to confirm.

(3) Press P-D for 3 seconds or wait for 10 seconds to exit.

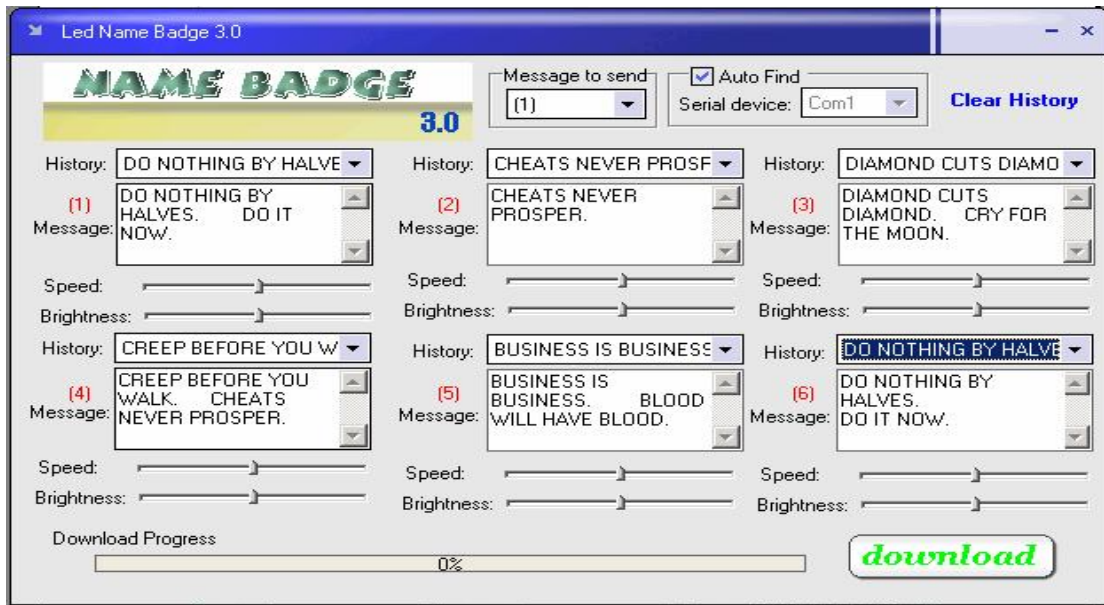
≡ Input text by PC remote

Notes: (1) One side of cable connect the IR Transmitter, another side connect COM port.



(2) The receiver of display aim at the transmitter(4cm<distance<8cm).

1.Open communication software "LED Name Badge 3.0" as follows:

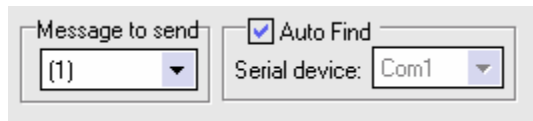


Button function

| | |
|--------------------|---|
| Clear History | Clear the old information |
| Message to Send | Choose the current information you need. |
| Auto Find | Find serial port automatically |
| Message Windows1-2 | Can input 512 characters |
| Message Windows3-6 | Can input 256 characters |
| Brightness | Adjust brightness(left= lower brightness, right=add brightness) |
| Speed | Adjust speed(Left=lower speed, right=add speed) |
| Download | Send current information to display |

2."Message1-6" is for input messages.

3. Choose the message and confirm the right COM port.



Message to send: [1] Auto Find: Serial device: Com1

4. Click  Button, will show send successfully.