

SASH 4.0



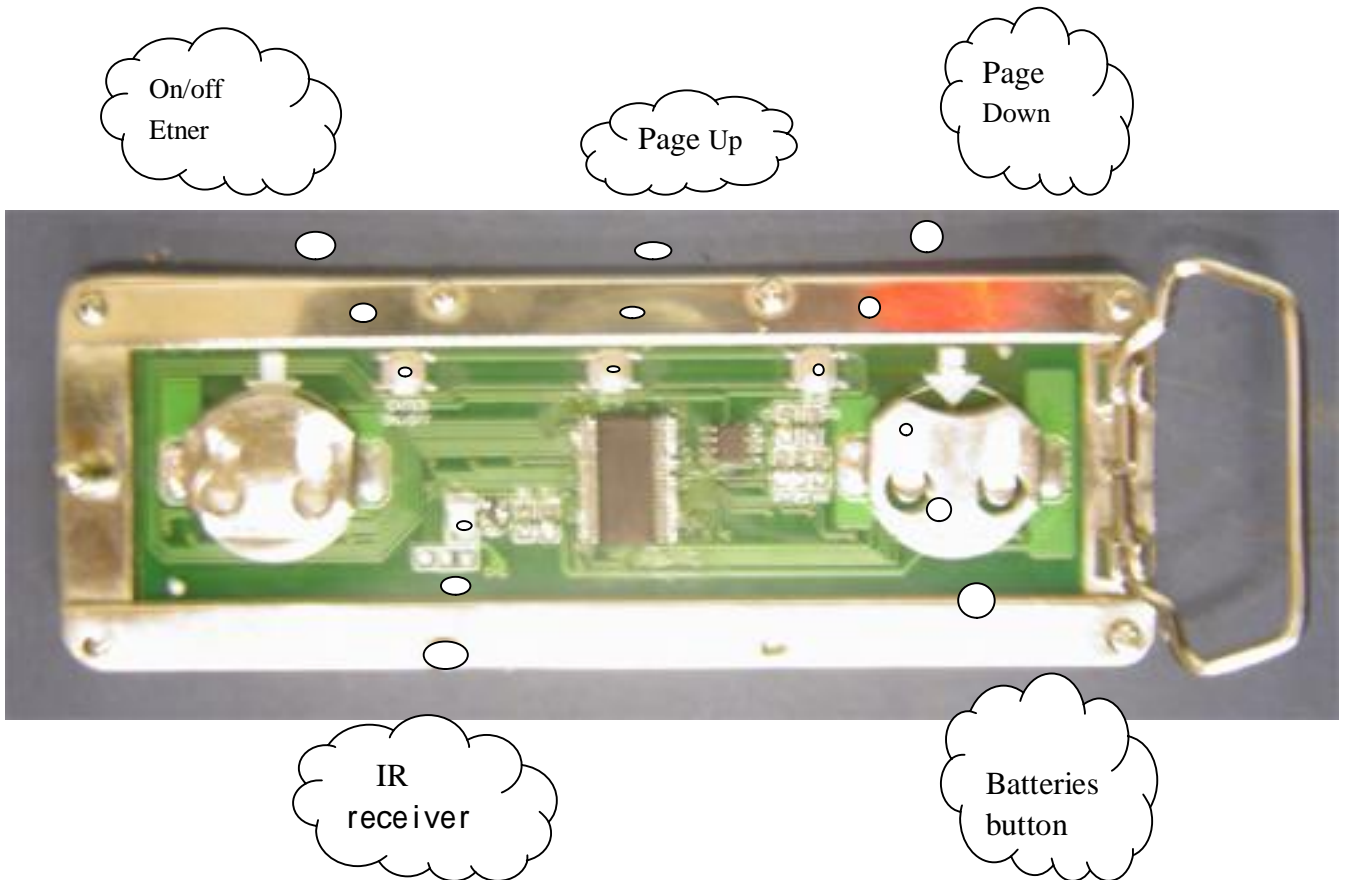
User's Manual

—.Illustration:

1. Power switch is ON/OFF(ENTER), the crust of battery seat is anode.
2. Badge can store 6 messages(1 can store 512 characters, 2-6 can store 256 characters), there is only can display any one every time.
3. The power supply for product is CR2032,please change battery when the brightness isn't enough or can't display(The battery can hold 20 hours).
4. Two communication ways: by key-press and PC remote.

Notes: Page Up =P-U, Page Down=P-D

BACK OF SASH

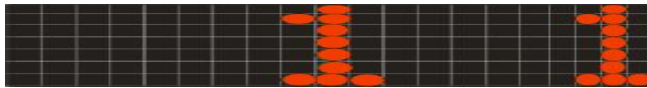


二. Key-press information:

In the natural display, When you press the **page up**(p-u) key, it shows you start to operate the **sash** and coming into the first grade menu, the key-press control procedure: adjust "P-U" or "P-D"(1-6), select the switch display info (SWITCH), input text (INPUT), move-left speed(Speed), brightness control(LUM). Then press **Enter** key coming into second grade menu :

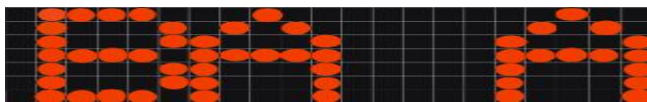
1. SWITCH: Choice menu(Total 6 pages), choose the display information

- (1) Enter choice menu, press "ENTER" when display SWITCH.
- (2) The right of display show the current data(1-6), by "P-U" or "P-D" to adjust the number between 1-6, press "ENTER" when you need page. and the display will exit the operation and enter the show estate.



2. INPUT: Input the content of the text (input the text newly).

- (1) Enter choice menu, press "ENTER" when the display show "INPUT" by "P-U" or "P-D"(1-6).
- (2) The right show the character, input character by "P-U" or "P-D", press "ENTER" after finish.
- (3) If you need input continuous character, press "ENTER" once a character confirmed,(press P-U or P-D all along, the character will roll until you loosen the key-press).



- (4) If you need add a space, please press "ENTER" again.
- (5) If you need delete a character, press "ENTER" for 3 seconds, the character is deleted when the display resumed to still.
- (6) Press "P-D" for 3 seconds or wait for 10 seconds, the display will exit operation and show the message.

3. LUM: Adjust the luminance (The number is larger, the luminance is higher).

(1) Enter choice menu, adjust menu by” P-D “or” P-U” when it show LUM, press “ENTER”.

(2) The number on the right show the brightness grade, adjust the number between 1-9 by” P-U” or “P-D”, press “ENTER” after finish adjusting and exit.

4. SPEED: Adjust the move speed(the number is larger, the speed is faster).

(1) Enter choice menu, show SPEED by P-U or P-D,then press ”ENTER”.

(2)The number on the right is for the speed, adjust the number by P-U or P-D, press “ENTER” after finish adjusting and exit.

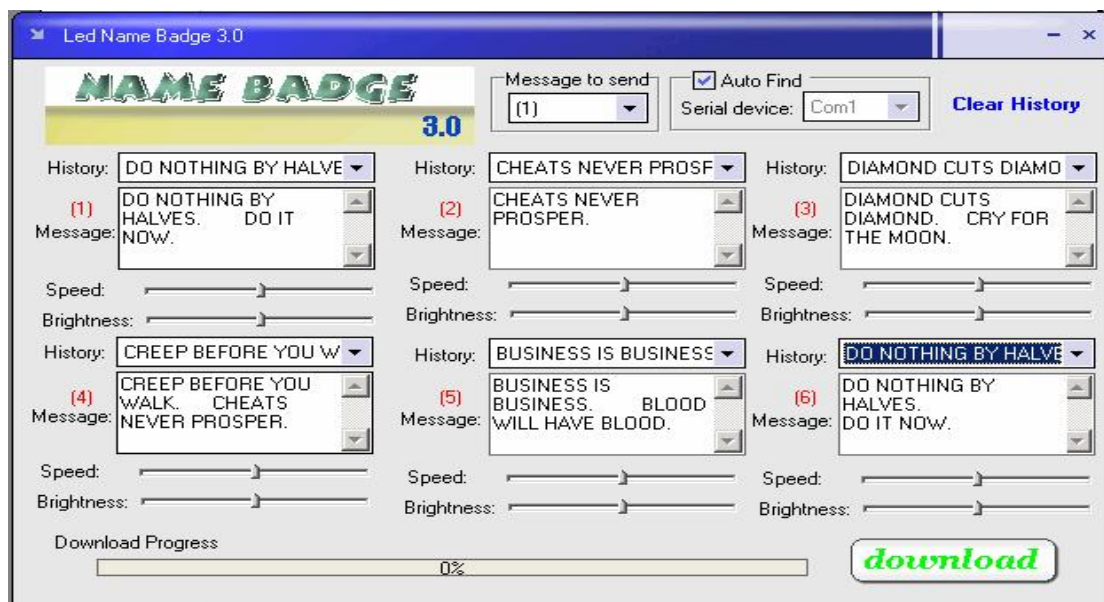
≡ Input text by PC remote

Notes: (1) One side of cable connect the IR Transmitter, another side connect COM port.



(2) The receiver of display aim at the transmitter(4cm<distance<8cm).

1.Open communication software ”LED Name Badge 3.0” as follows:



Button function

Clear History	Clear the old information
Message to Send	Choose the current information you need.
Auto Find	Find serial port automatically
Message Windows1-2	Can input 512 characters
Message Windows3-6	Can input 256 characters
Brightness	Adjust brightness(left= lower brightness, right=add brightness)
Speed	Adjust speed(Left=lower speed, right=add speed)
Download	Send current information to display

2."Message1-6" is for input messages.

3. Choose the message and confirm the right COM port.

The screenshot shows a software interface with two main sections. On the left, there is a 'Message to send' dropdown menu with '[1]' selected. On the right, there is a 'Serial device' dropdown menu with 'Com1' selected. Above the 'Serial device' dropdown, there is a checked checkbox labeled 'Auto Find'.

4. Click  Button, will show send successfully.